

# Operational Excellence for Unconventional

---

Jose A. Jimenez

Director O&G Industry Programs

February 2018



# 2017 Emerson At-A-Glance

FOUNDED

**1890**

HEADQUARTERS IN  
**ST. LOUIS, MO**  
USA

## RECOGNITION

**#139**

2017  
**FORTUNE 500**  
AMERICA'S LARGEST  
CORPORATIONS BY REVENUE

**Top 50 Employers**  
WOMEN ENGINEERS MAGAZINE

**America's Best Employers**  
FORBES MAGAZINE

## TWO BUSINESS PLATFORMS



EMERSON AUTOMATION SOLUTIONS



EMERSON COMMERCIAL & RESIDENTIAL SOLUTIONS

WORLDWIDE

**76,500**  
EMPLOYEES

**200**  
MANUFACTURING  
LOCATIONS

## INNOVATION

EMERSON EMPLOYEES WERE AWARDED MORE THAN

**2,100** PATENTS WORLDWIDE IN 2017

**\$15.3**  
**BILLION**

IN GLOBAL SALES  
FISCAL YEAR 2017

**61**  
YEARS

CONSECUTIVE YEARS OF  
INCREASED DIVIDENDS

**NYSE:**  
**EMR**





## Emerson Automation Solutions *Enabling Top Quartile Results*

### Operational Certainty

Our technology- and engineering-based program is designed to help industrial companies achieve Top Quartile performance and recover more than \$1 trillion\* in **operational** losses globally.

### Project Certainty

We combine innovative technology and engineering to improve **capital efficiency** and boost **project schedule** reliability—helping to address the billions of dollars lost due to project excesses each year.

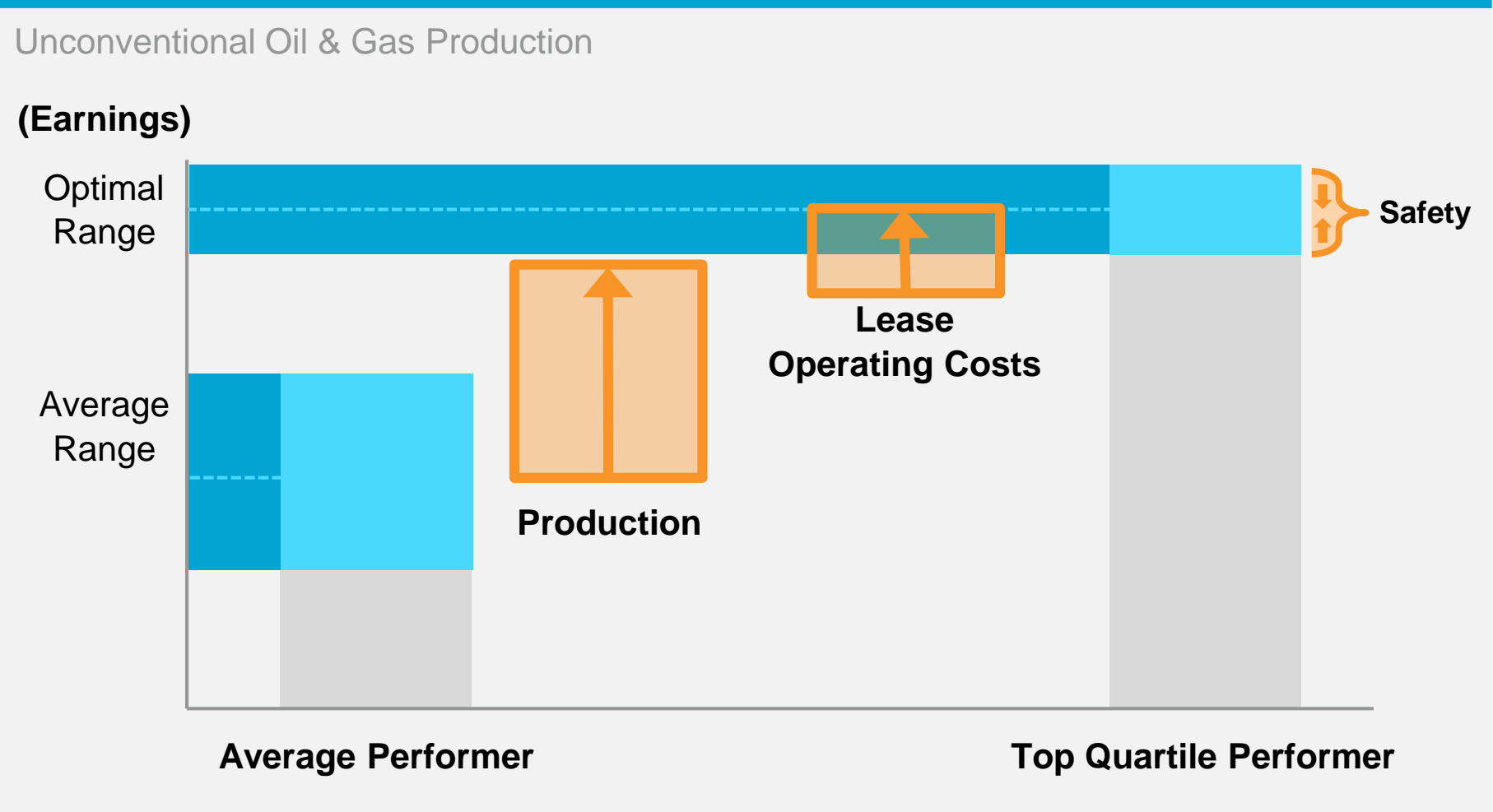
### Plantweb Digital Ecosystem

**Our Plantweb digital ecosystem provides a robust portfolio** of hardware, software, intelligent devices and services for securely implementing the Industrial Internet of Things, with measurable business performance improvement.

\*Emerson internal estimate

# Operational Certainty Drives Top Quartile Performance & Enables Industry-Leading Business Results

## 6% EBITDAX Improvement Opportunity by Partnering on a Comprehensive Improvement Program



### EBITDA Opportunity Breakdown

Production	
Automated Production Surveillance	7-8%
Production Modelling & Analytics	
Produced Fluids Management	
Lease Operating Costs	
Automated Well Cost Allocation	2-3%
Equipment Reliability	
Vendor Compliance & Measurement	
Health, Safety, Security & Environmental	
Reduce Personnel Exposure	Mitigate Variability
Asset Integrity Monitoring	
Mitigate Environmental Impact	

Source: Benchmarking Data & Internal Estimates; Note: EBITDAX has been used as a proxy for Business Performance (Earnings)

**Top Quartile Performers Operate High-Performing Facilities while also Minimizing Costs and Eliminating the Risk of Catastrophic Events**

# Best-In-Class Operational Practices for Unconventional Producers

## Link Strategy to Business Objectives



**COLLABORATION**  
high quality collaborative efforts between people and work groups



**WELL REVIEW PROCESS**  
are more efficient through near real-time analysis of financial & operating data

Operational leadership is committed to



**MANAGE BY EXCEPTION**

## Demand a Culture of Accountability



Produced fluids are tracked to custody transfer producing real-time transaction data for **ROYALTY & VENDOR** information integrity



Performance is based on **PEER LEADERSHIP** not adherence to plan



Continuous improvement mindset with **ARTIFICIAL LIFT SYSTEMS**

## Embed Expertise in Work Processes & Applications



**STAFF PROFICIENCY** is accelerated through intuitive procedures enabled by technology



**AUTOMATES OR ELIMINATES** personnel tasks in hazardous areas



**REAL-TIME PRODUCTION MODELS** are used to optimize performance instead of comparable type-curves

## Optimize with Real-Time Data



Work processes are **INTEGRATED** and data-driven



Work identification is driven by **WELL & EQUIPMENT PERFORMANCE**



**SAFETY INSTRUMENTATION** including relieving devices are monitored in near real time to ensure proper functionality

# How Emerson's Operational Certainty Helps

**Cross-Functional Consulting Expertise**

**Consistent Methodologies**

**Defined Performance Benchmarking**

**Digital Ecosystem**



**EXPERT PARTNERING**

Strategy Alignment	
Benchmarking	Strategy, opportunity & solution definition
Performance & information management consulting	Improvement program management
Domain Expertise	
Performance improvement & monitoring	Industry knowledge & application experience
Operational & business performance information flows	
Global Service	
Training & competency development	Local resources supported by global expertise

# Emerson's Digital Ecosystem for Unconventional Oil & Gas

## FOUNDATIONAL SOLUTIONS

## IIoT SOLUTIONS

Services

Project, Lifecycle, and Educational Services

**Consulting**

Operational, Digital Transformation

Analytics & Architecture

Oil & Gas Expertise

**Analytics as a Service**

Microsoft Azure

Connected Services: Multiphase Flow Meter

Analytics

**RTU / SCADA / ICSS Solutions**

Tank Management

Chemicals Management

Produced Fluids Management

Well Management & Lift Optimization

Fiscal Metrology

Well Test Management

**Operational Performance Software**

Mobile SCADA WiFi

Plantweb Optics

Surveillance, Analytics & Workflows

Plantweb Insight: Corrosion

Plantweb Advisor: Compressors

Dynamic Lift Optimization

Production Optimization

Connectivity

**Secure First Mile**

Edge Computing Secure Data Pathways

Data

**Intelligent Field Devices**

Level Interface Detection

Multi-Phase Flow Measurement

Coriolis Measurement

Electric Actuation

**Pervasive Sensing**

Pressure

Pressure Relief Valve

Radar Level

Toxic Gas

Non-Intrusive Temperature

Non-Intrusive Corrosion

# Emerson's Digital Oilfield Solutions



Field Management



Processing Facilities



Produced Fluids



Wellpads



Wells

**Commercial Management**

**Operations Management**

**Wellpad Automation & Control Systems**

**Intelligent Devices & Instrumentation**

**Operations / Asset Optimization**

**Field Surveillance**

**Facilities Optimization**

**Field Monitoring**

**Tanks and Transfers**

**Wellpad Management**

**Wellhead Optimization**

**Custody Transfer**

**Measurement and Final Control**

**Partner Solutions**

**Plantweb Insight & Advisor Applications**

**AMS**

**DeltaV**

**OpenEnterprise**

**SmartProcess O&G Applications**  
 Tank Manager, Well Optimizer  
 Surface Control Manager, Injection Manager

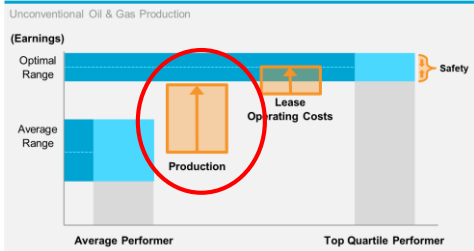
**RTUs: FBXXX, ROC800 and ControlWave Micro**

**Flow Computers / Skids / Systems**

**Level/Pressure/Temperature/Control Valves/Actuators/Regulators/Corrosion/Erosion**



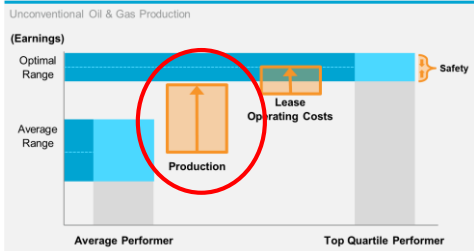
# Partnering to Deliver Production Outcomes



SOLUTIONS	Automated Production Surveillance		Production Modelling & Analytics	Produced Fluids Management
	RTU & SCADA	Integrated Well Test	Integrated Reservoir & Surface Production Modelling	Allocation
	Pervasive Sensing	Automated Choke Control	Dynamic Lift Optimization	Custody Transfer
	Automated Workflows	Surface Controls Manager		
	Well & Lift Optimization	Tank Manager		
SERVICES	Consulting Services	Certified Automation Services	Connected Services	



# Partnering to Deliver Production Outcomes



**Alarms consume from SCADA and/or generated through Surveillance Workflows**

Entity Name	Field	Production Method	Gas Rate vs Forecast	Gas Rate vs Crit. Gas	Oil Rate vs Forecast	WGR	WOR	GOR	TI Actual vs Theoretical
Well 1	Field 1	NATURAL FLOW	●	●	●	●	●	●	●
Well 2	Field 1	NATURAL FLOW	●	●	●	●	●	●	●
Well 3	Field 1	FOAMER	●	●	●	●	●	●	●
Well 4	Field 1	NATURAL FLOW	●	●	●	●	●	●	●
Well 5	Field 1	PLUNGER	●	●	●	●	●	●	●

**Historical Trend for each alarm**

Date: 12/28/2016	Unit: None
Actual Value: 9.0	Description: Normal
Hi-Hi Limit: 9.6	Hi Limit: 9.2
Lo Limit: 8.3	LoLo Limit: 7.9

**Production Modelling & Analytics**

**Produced Fluids Management**

**Integrated Reservoir & Surface Production Modelling**

**Allocation**

**Dynamic Lift Optimization**

**Custody Transfer**

**Well & Lift Optimization**

**Tank Manager**

**SERVICES**

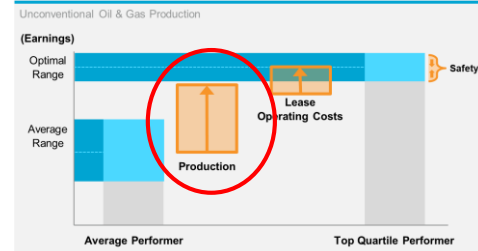
**Consulting Services**

**Certified Automation Services**

**Connected Services**



# Partnering to Deliver Production Outcomes



**Alarms consume from SCADA and/or generated through Surveillance Workflows**

**Production Modelling & Optimization**

**Produced Fluids**

**Alarms Dashboard**

Well Review

Wellbore Schematic

ESRI Map

Downtime

Financial Reports

Well Profile

Alarms

PDA

**Well Info**

General Information

Status: PRODUCING

Primary Prod Method: NATURAL FLOW

General Info.

Completion Id

Well Id

API

Status

Primary Prod Method

Secondary Prod Method

Completion Date

First Production Date

Reservoir

CLAT (ft)

Number of Stages

Total Perf. Clusters

Avg. Cluster Spacing (ft)

Successful Perf. Clusters

Unsuccessful Perf. Clusters

Water Pumped per CLAT (bbbls/ft)

Sand per CLAT (lbs/ft)

EUR

Gas EUR MMscf 4,815.804

Gas EUR per CLAT MMscf/ft 0.750

Oil EUR Mbbls 0.000

Oil EUR per CLAT Mbbls/ft 0.000

Latest Prod - 30 Days (Max Rates)

Gas Rate Mscf/d 585

Water Rate bbbls/d 1.4

Oil Rate bbbls/d 0.0

Cumulative Production

Gas Cum Total Bscf 2,560

Water Cum Total Mbbls 22

Oil Cum Total Mbbls 0

**Production**

Daily Production

Gas Rate (Mscf/d)

Water Rate (bbbls/d)

Oil Rate (bbbls/d)

Target Volume

Gas Target (Mscf/d)

Oil Target

Gas Rate: 568.3 Mscf/d

Gas Target: 533.9 Mscf/d

Diff: 34.4 Mscf/d

Oil Rate: 0 bbbls/d

Oil Target: 0 bbbls/d

Diff: 0 bbbls/d

**Prod Engineering**

Critical Gas Rate

Gas Rate (Mscf/d)

Critical Gas Rate - Turner (Mscf/d)

Critical Gas Rate - Coleman (Mscf/d)

Tubing Index

Tubing Index

Gas Rate (Mscf/d)

TI Theoretical

TI Actual

Gas Rate: 568.3 Mscf/d

Gas Target: 533.9 Mscf/d

Coleman: 181.9 Mscf/d

Turner: 219.7 Mscf/d

Last Evaluation Date: 01/17/2017

Actual: 10.9467

Theoretical: 14.7438

Date	Comment
01/11/2017	shut in on HIHI, fired asco, belly dumped, reset ESD, RTS
01/07/2017	freezing issues possibly in flowline
01/04/2017	turned on FST

Date	Comment
01/11/2017	shut in on HIHI, fired asco, belly dumped, reset ESD, RTS
01/07/2017	freezing issues possibly in flowline
12/19/2016	flowline froze just up stream of separator

Start Date	End Date	Description
05/20/2015	05/21/2015	Surface Maintenance
05/18/2015	05/19/2015	Workover
04/09/2015	04/10/2015	Surface Maintenance

**Events - Alarms**

Production Events

Downtime Events

Wellview Events

Latest Alarms

Gas Rate vs Crit Rate

TI Actual vs Theo

Gas Rate vs Fcts

Oil Rate

GOR

WGR

WOR

Last Data Date Evaluated: 1/16/2017

SERVICES

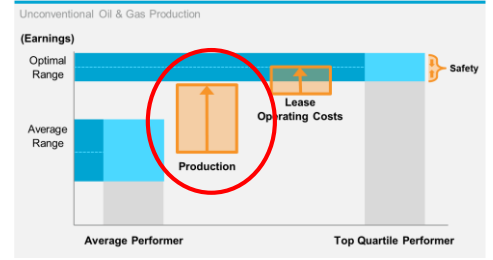
Cons

**Well Review Tool:**

- Multi Source Integration
- Data and Surveillance/Optimization Workflow
- Single and Multi-Entity Capabilities



# Partnering to Deliver Production Outcomes



Alarms consume from SCADA and/or generated through Surveillance

Produced Fluids

Entity Navigation

- AREA1
- FST
- FIELD
- FRANK EATON
  - Disposal - Salt Water
  - Drilling Gas
  - Drilling Oil
  - INJECTION
  - Injection - Water
  - MISC EQUIPMENT
  - Production - Gas
  - Production - Oil
  - ESP
    - Drilling
    - Permanently Abandon
    - Producing
      - ALLINE 15-19N-2W
      - ALLINE 22-19N-2W
      - BAY 30-21N-2E 1W
      - BAY 31-21N-2E 1W
      - BAY 32-21N-2E 1W
      - BECK 26-18N-2W 1
      - BECK 35/2-18N-2W
      - BECK 36 1-18N-2W
      - BETTY 14-18N-3W
      - BIG IRON 4-21N-1E
      - BIG IRON 5-21N-1E
      - BIG IRON 9-21N-1E
      - BJ 17-18N-3W 2M
      - BJ 20-18N-3W 2W
      - BJ 21-18N-3W 1W
      - BOLAY 19-21N-1E
      - BOLAY 20-21N-1E
      - BOLAY 29-21N-1E
      - BOLAY 30-21N-1E
      - BRANSON 33\_4-18
      - BRIAN 10-18N-3W
      - BRIAN 4-18N-3W 1
      - BRIAN 9-18N-3W 1
      - BUD 18-21N-2E 1W
      - BUD 19-21N-2E 1M
      - BUFFINGTON 29-2
      - BUFFINGTON 32-2
      - BULLING 17-19N-2
      - BULLING 18-19N-2
      - BULLING 8-19N-2V
      - C WINNEY 26-19N
      - C WINNEY 36-19N
      - CAIG 22-19N-4W 1
      - CAIG 23-19N-4W 1
      - CAIG 26-19N-4W 1
      - CARMICHAEL 13-2
      - CARMICHAEL 23-2
      - CASTEEL 24 25-21N
      - CEDAR GROVE 21-
      - CEDAR GROVE 22-
      - CEDAR GROVE 28-
      - CHARLEEN 14-19N

Portal - Main Page

Current Entity: Group(27)

Alarms Dashboard

Portal - Main Page

Current Entity: ALLINE 22-19N-2W 1WH

Date Range: No date range set

1m 3m 6m 1y 5y Clear

Well Review

ESP Workflow

Well Schematic

OVS Modules...

ESRI Map

OVS Connect

Filters & Watchlist

Auto Refresh: ON

Zoom Screen: 100%

Well Schematic

Expanded

ALLINE 22-19N-2W 1WH

Source: WellView

Casing

Top MD ft	Bottom MD ft	Inner Diameter in	Outer Diameter in	Description	Start Date	End Date
25.0	65.0	15.25	16.00	CONDUCTOR	12/01/2013	12/01/2013
25.0	483.0	8.92	9.63	SURFACE	12/31/2013	12/31/2013
25.0	5,833.0	6.28	7.00	INTERMEDIATE 1	01/07/2014	01/07/2014
5,697.8	10,382.0	4.00	4.50	LINER	01/11/2014	01/11/2014

Tubing

Top MD ft	Bottom MD ft	Inner Diameter in	Outer Diameter in	Description	Start Date	End Date
25.0	5,648.0	2.44	4.50	TUBING - PRODUCTION	04/06/2014	

Tubing Elements

Top MD ft	Bottom MD ft	Component	Model
25.0	5,536.6	Tubing	T&C Upset
5,536.6	5,537.1	Cross Over	400 PM
5,537.1	5,554.6	ESP - Pump	400PMSXD
5,554.6	5,578.1	ESP - Pump	400PMSXD
5,578.1	5,601.6	ESP - Pump	400PMSXD
5,601.6	5,610.1	ESP - Pump	400PMSXD
5,610.1	5,614.4	INTAKE	400GSTV
5,614.4	5,620.5	Seal	FSB3D8 H6 FERSSCV SB/SB PFSA
5,620.5	5,643.9	ESP - Motor	450MSP1
5,643.9	5,648.0	Pressure / Temperature Sensor	ASM5000

Perforations

Top MD ft	Bottom MD ft	Perf. Interval ft	Description	Start Date	End Date
5,873.0	5,874.0	1.0	OPEN*PERFORATED	03/24/2014	03/24/2014
5,957.0	5,959.0	2.0	OPEN*PERFORATED	03/24/2014	03/24/2014
6,041.0	6,043.0	2.0	OPEN*PERFORATED	03/24/2014	03/24/2014
6,125.0	6,127.0	2.0	OPEN*PERFORATED	03/24/2014	03/24/2014
6,209.0	6,210.0	1.0	OPEN*PERFORATED	03/24/2014	03/24/2014
6,293.0	6,295.0	2.0	OPEN*PERFORATED	03/24/2014	03/24/2014
6,377.0	6,379.0	2.0	OPEN*PERFORATED	03/24/2014	03/24/2014
6,461.0	6,463.0	2.0	OPEN*PERFORATED	03/24/2014	03/24/2014

OVS Connect

Event Comments

on HI/Hi, fired asco, belly d, reset ESD, RTS

g issues possibly in flowline

on FST

time Events

on HI/Hi, fired asco, belly d, reset ESD, RTS

g issues possibly in flowline

e froze just up stream of tor

view Events

Date	Description
/2015	Surface Maintenance
/2015	Workover
/2015	Surface Maintenance

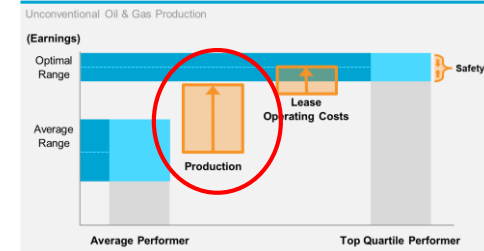
Alarms

Evaluated: 1/16/2017

• Single and Multi-Entity Capabilities



# Partnering to Deliver Production Outcomes



Alarms consume from SCADA and/or generated through Surveillance

Production Modelling

Produced Fluids

GLO Curve Fit Tool - Beta 3 - Microsoft Excel

File Home Insert Page Layout Formulas Data Review View Developer GLO Curve Fit PI DataLink PI Builder Team

Select Refresh Fit Import from PointersInTest Export to PointersInTest Import from File Export to File Import from File Copy from AdHocData Export to File Import from PI Copy Completion Select Deselect Refresh All All Select Results

Active Completion Performance Curve Data Completion Test Data Prosper Data

Completion01	W01_C01	Curve	Coefficient	a	b	c	n	BS&W	GOR	Fluids at Zero Lift Gas	Fluids at Peak Lift Gas	Peak Lift Gas	% Peak Fluids at 150% Peak Lift Gas	Pressure	Single Curve?
Display Curves	Display Fit	H	Actual	600	50.0	-0.90	0.450	65.0	0.20	600	1294	1615	97.9%	300	TRUE
<input checked="" type="checkbox"/> Actual	<input checked="" type="checkbox"/> Reference	H	Reference	63	2.0	0.00	0.849	57.0	0.45	63	613	1700	84.9%	0	TRUE
<input checked="" type="checkbox"/> Fitted	<input checked="" type="checkbox"/> < 3 Months														
<input checked="" type="checkbox"/> Prosper	<input checked="" type="checkbox"/> 3-6 Months														
	<input checked="" type="checkbox"/> 6-9 Months														
	<input checked="" type="checkbox"/> 9-12 Months														
	<input checked="" type="checkbox"/> > 12 Months														
<input type="radio"/> Test Data	<input checked="" type="checkbox"/> All														
<input type="radio"/> Prosper Curve															

	Maximum	Fit	Minimum
a	1000	600	400
b	300.0	50.0	0.0
c	0.000	-0.90	12.000
n	1.500	0.450	0.200
BS&W	90	65.0	0
GOR	5.00	0.20	0.00
Fluids at Zero Lift Gas	1500	600	400
Fluids at Peak Lift Gas	1850	1294	625
Peak Lift Gas	1750	1615	250
% Peak Fluids at 150% Peak Lift Gas	98.0%	97.9%	80.0%

Standard Error	Fluids	Oil	Gas	Water
Actual	197.2	78.0	14.7	173.9
Fit	197.2	78.0	14.7	173.9
Improvement	0%	0%	0%	0%

Fluids

Fluid Flow

Actual Curve

Reference Curve

Fit Curve

LCL

UCL

Prosper Curve

Reference Data

< 3 Months

3-6 Months

6-9 Months

9-12 Months

> 12 Months

Source: WellView

Description	Start Date	End Date
CONDUCTOR	12/01/2013	12/01/2013
SURFACE	12/31/2013	12/31/2013
IMMEDIATE 1	01/07/2014	01/07/2014
LINER	01/11/2014	01/11/2014

Description	Start Date	End Date
PRODUCTION	04/06/2014	

Model

T&C Upset

400 PM

400PMSXD

400PMSXD

400PMSXD

400PMSXD

400GTV

FSB3DB H6 FERSSCV SB/SB PFSA

450MSP1

ASM5000

ion	Start Date	End Date
JRATED	03/24/2014	03/24/2014
JRATED	03/24/2014	03/24/2014
JRATED	03/24/2014	03/24/2014
JRATED	03/24/2014	03/24/2014
JRATED	03/24/2014	03/24/2014
JRATED	03/24/2014	03/24/2014
JRATED	03/24/2014	03/24/2014
JRATED	03/24/2014	03/24/2014

OVS Connect

Event Comments

Comment

on HIH, fired asco, belly d, reset ESD, RTS

g issues possibly in flowline

on FST

Current Date/Time

Test Comment #HelloWorld

Posted: 11/10/2016 2:55:02 PM

bar-h.png

Event Comments

Comment

on HIH, fired asco, belly d, reset ESD, RTS

g issues possibly in flowline

e froze just up stream of tor

Event Comments

Date	Description
2015	Surface Maintenance
2015	Workover
2015	Surface Maintenance

Alarms

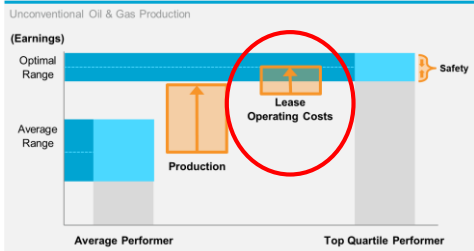
Evaluated: 1/16/2017

Entity Capabilities

Workflow



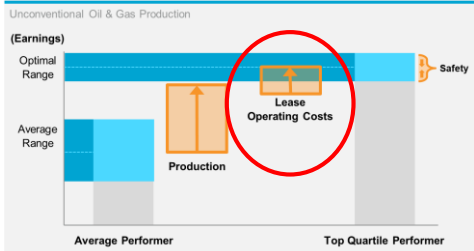
# Partnering to Deliver Lease Operating Cost Outcomes



SOLUTIONS	Automated Well Cost Allocation	Equipment Reliability		Vendor Compliance & Measurement
	RTU & SCADA	Intelligent Device Management	Reliable Control & Instrumentation Equipment	Adaptive Chemical Management
	Automated Marginal Well Workflow	Online Vibration Analysis	Equipment Health Analytics	Automated SWD Haul Compliance
	Integrated Well Test	Pervasive Sensing		
	Well & Lift Optimization			
SERVICES	Reliability Consulting	Consulting Services	Certified Automation Services	Connected Services



# Partnering to Deliver Lease Operating Cost Outcomes



SOLUTIONS

Automated Well Control

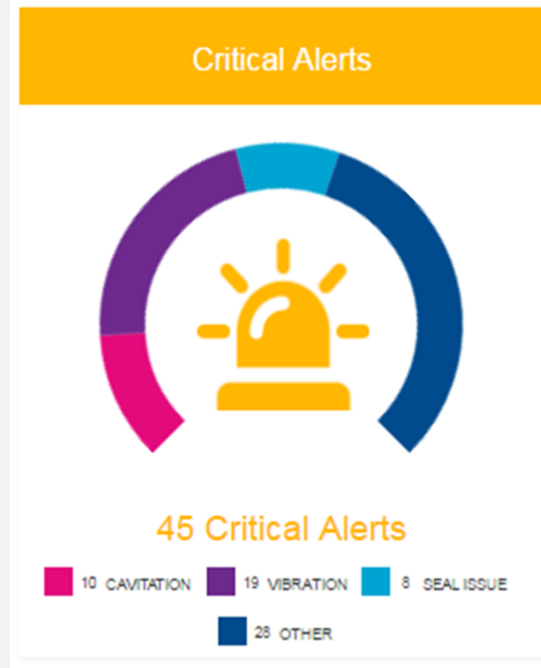
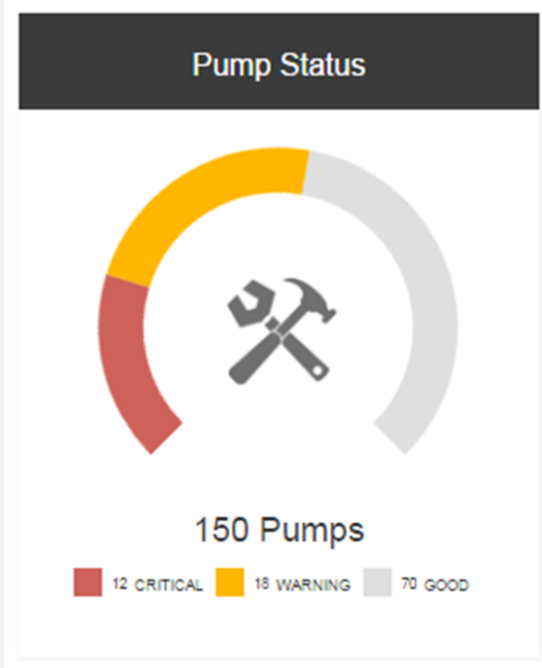
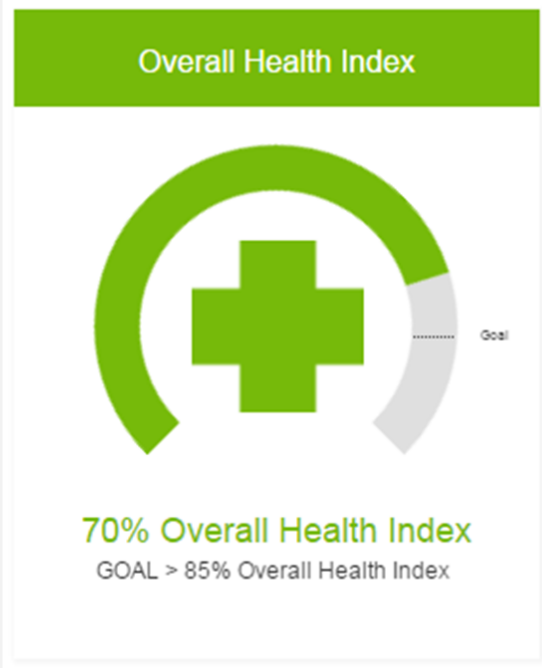
RT

Automated

Integr

Well & Lift Optimization

Vendor Compliance &



SERVICES

Reliability Consulting

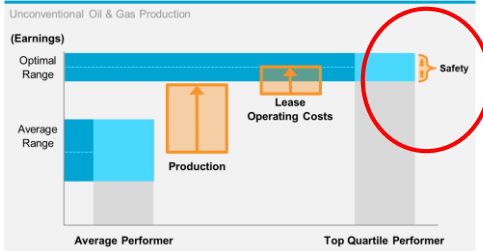
Consulting Services

Certified Automation Services

Connected Services



# Partnering to Deliver Safety & Environmental Outcomes



SOLUTIONS	Reduce Personnel Exposure		Mitigate Environmental Impact	Asset Integrity Monitoring
	Remote Toxic Gas & Vapor Detection	Mobility Tools & Applications	PRV, PVRV Monitoring	Corrosion & Erosion
	Automated Tank Level	Pervasive Sensing	Electric Level Controls	Valve Partial Stroke Testing
				Intelligent Device Management
				Reliable Control & Instrumentation Equipment

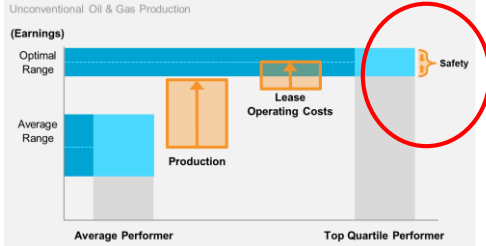
SERVICES


Certified Automation Services





# Partnering to Deliver Safety & Environmental Outcomes



SOLUTIONS	Reduce Personnel Exposure	Mitigate Environmental Impact	Asset Integrity Monitoring
	Remote Toxic Gas & Vapor Detection	Mobility Tools & Applications	PRV, PVRV Monitoring
	Automated Tank Gauging	Invasive Sensing	Electric Level Controls
	 <p style="font-weight: bold; color: #004a87;">Mobile SCADA WiFi</p>		
			Intelligent Device Management
			Reliable Control & Instrumentation Equipment

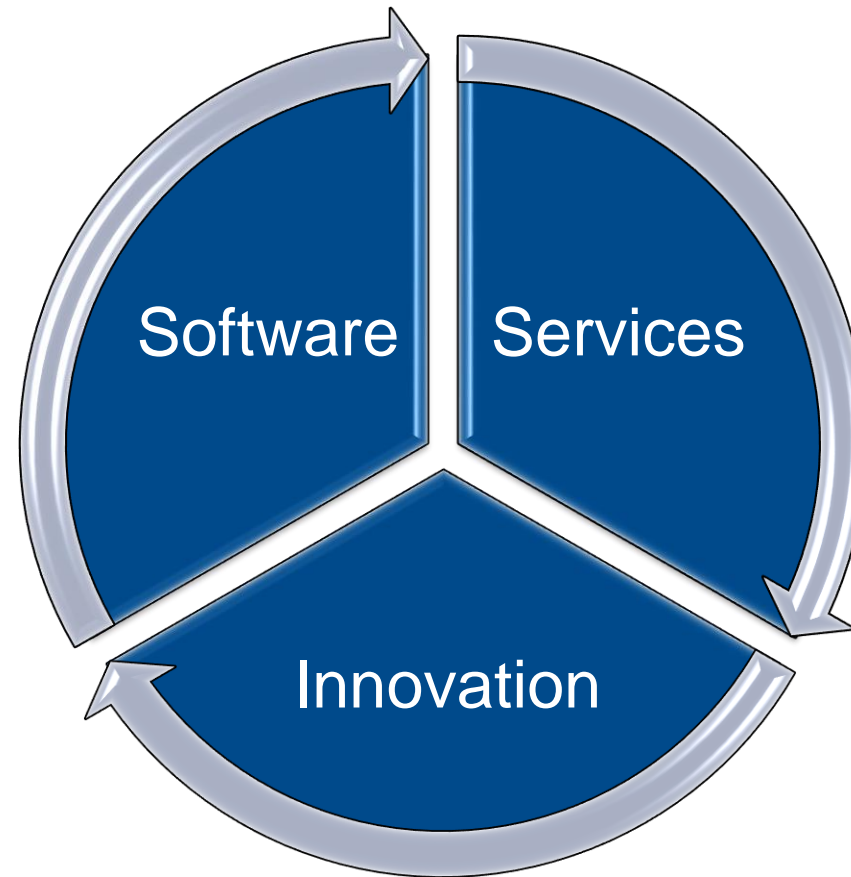
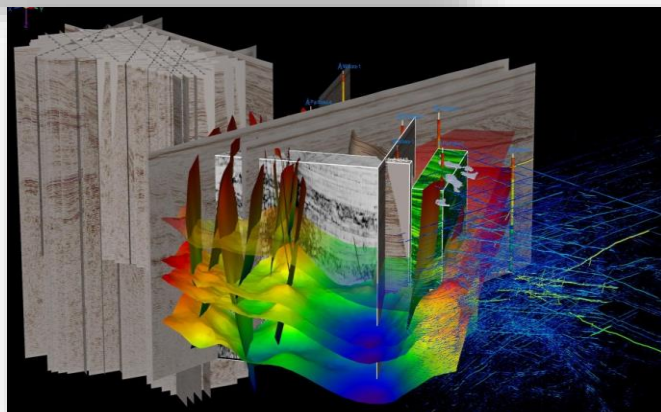
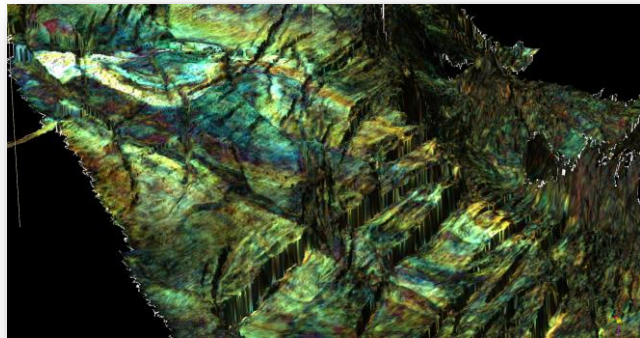
SERVICES

Certified Automation Services

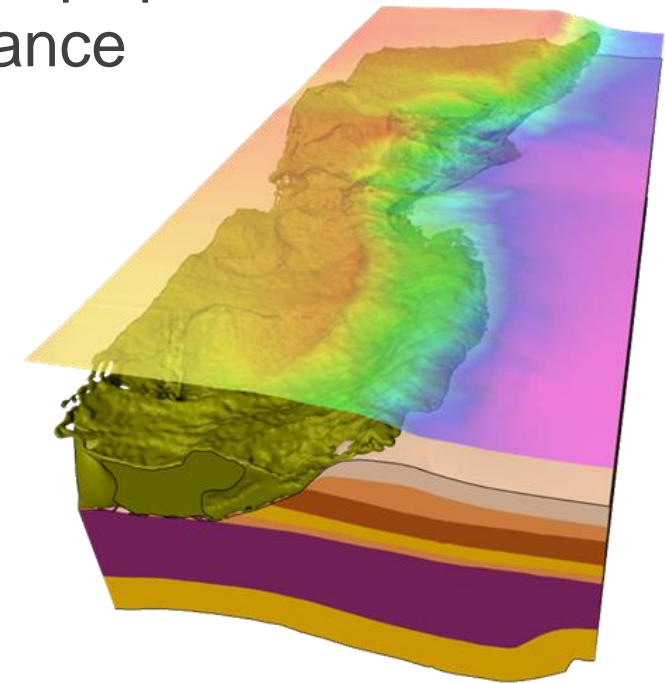


# Additional Emerson Capabilities

**Extensive E&P Software** to help customers find, model, and forecast reserves and production



**High End Consulting Services** to help customers achieve top-quartile performance



**Custom Development** to help customers access and maintain next-generation technology

# The Path to Top Quartile Performance

## Addressing Your Challenges?

### How Emerson can help.

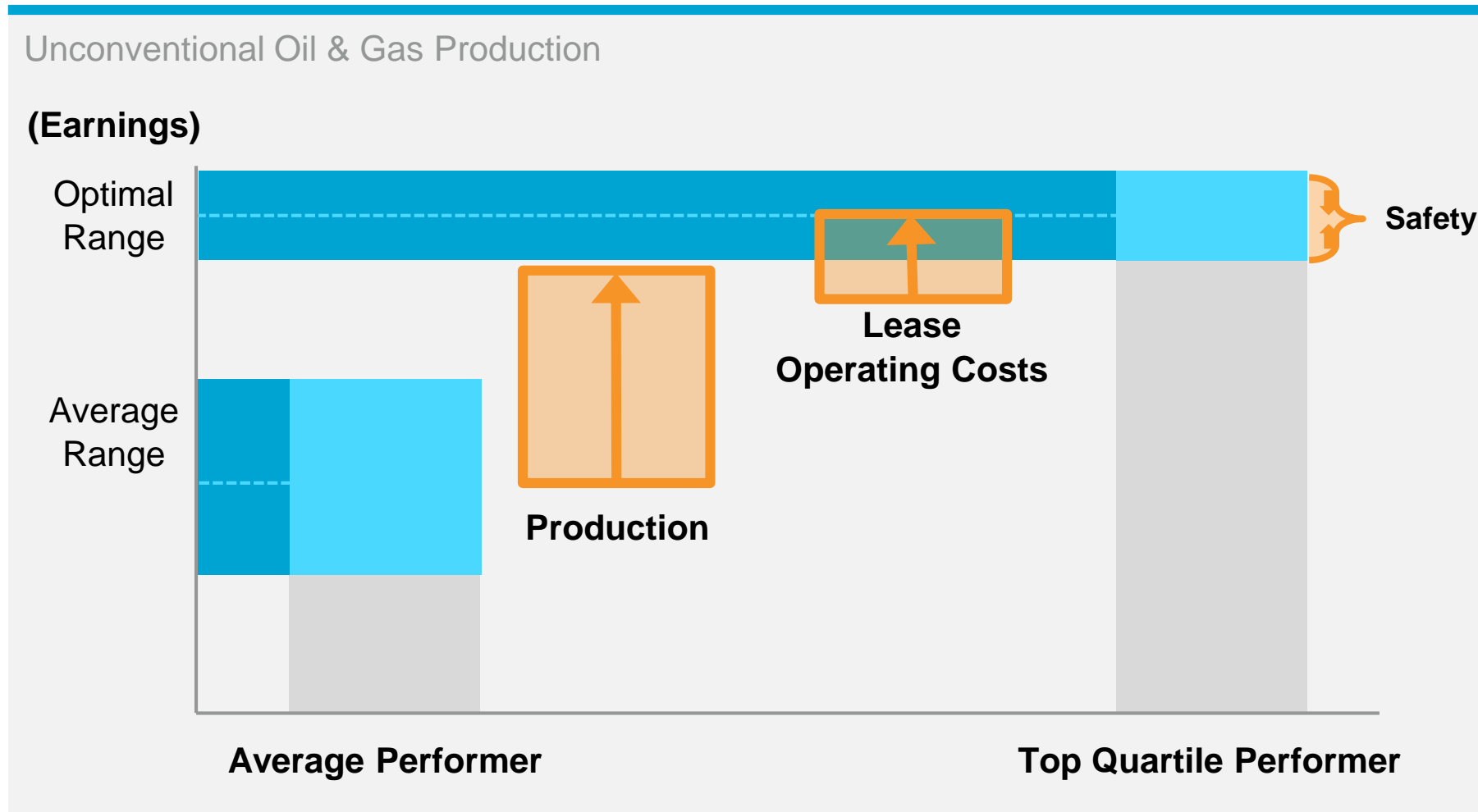
- Explore how our expertise and capabilities align to your desired outcomes
- Identify and prioritize programs with high business impact to help you achieve top quartile performance
- Develop a transformation roadmap to support and accelerate your strategic plan

### Payback can be fast

- Clients have seen investment payback of weeks to months

**Emerson has the breadth and experience to help you leverage automation technologies and services to achieve Top Quartile operational performance**

# The Opportunity is 6% EBITDAX Improvement



## EBITDA Opportunity Breakdown

Production	
Automated Production Surveillance Production Modelling & Analytics Produced Fluids Management	7-8%
Lease Operating Costs	
Automated Well Cost Allocation Equipment Reliability Vendor Compliance & Measurement	2-3%
Health, Safety, Security & Environmental	
Reduce Personnel Exposure Asset Integrity Monitoring Mitigate Environmental Impact	Mitigate Variability

Source: Benchmarking Data & Internal Estimates; Note: EBITDAX has been used as a proxy for Business Performance (Earnings)

**Partnering with Emerson on a Comprehensive Improvement Program to Deliver Shareholder Value**

The image shows an industrial facility, likely a gas processing plant, with a large blue overlay on the left side. The background features a clear blue sky with scattered white clouds, a line of green trees, and a gravel area. In the foreground, there are industrial structures including a tall metal tower with a platform, a large horizontal pipe supported by red pillars, and a small white building. The blue overlay contains white text.

# Operational Excellence for Unconventional

Emerson can help your daily production match its true potential and get the most out of your existing assets

